

AC SERVO MOTOR

Three-Phase Permanent Magnet AC Servo Motors

RPM Range	: 2000 to 3000
Operating Frequency	: 200Hz (max.)
Range	: 11 Nm to 260 Nm, 2.3 KW to 55 KW



TECHNICAL SPECIFICATION CHART



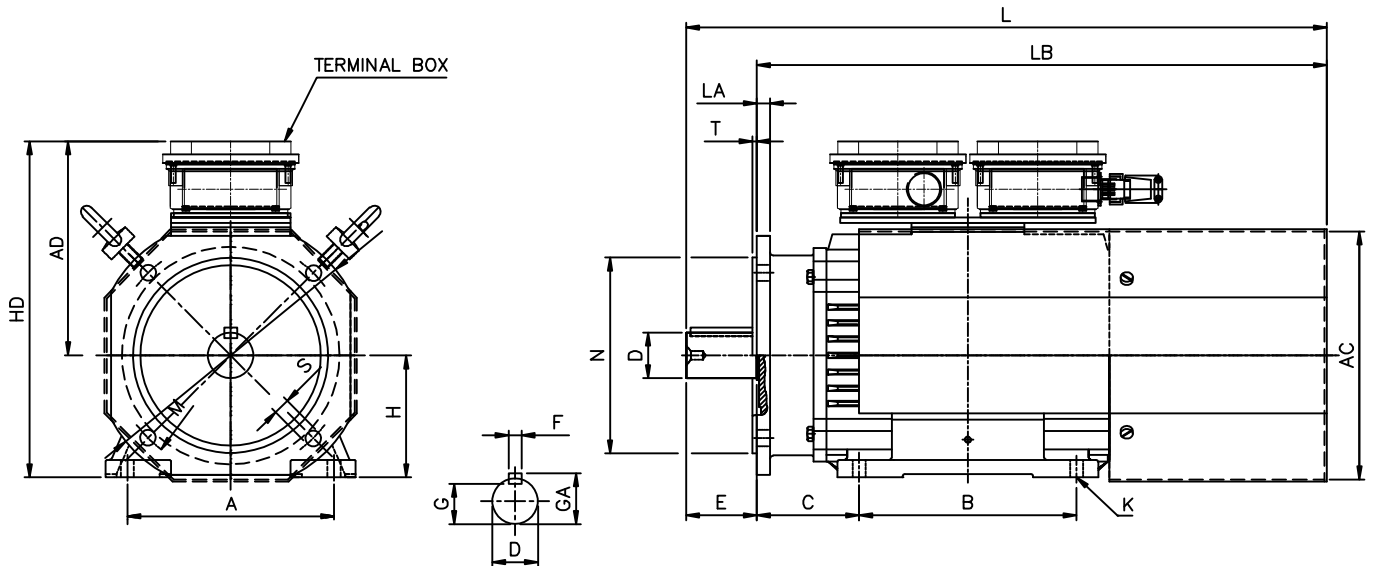
TECHNICAL DATA MARK P.M.S. MOTORS

FRAME	POWER KW	RPM	RATED TORQUE Nm.	RATED CURRENT A	V/1000 RPM VOLTAGE VOLTS	TORQUE CONSTANT Kt.Nm/Amp.	POLES	ROTOR INERTIA kg.cm ²	P.F./Eff	FREQUENCY Hz	WEIGHT Kg
90S	2.3	2000	11	4.9	153	2.2	6	22	0.85/0.9	100	19
90L	4.2	2000	20	8.5	160	2.3	6	45	0.85/0.94	100	24
90L	4.7	3000	15	10	101	1.5	6	45	0.85/0.94	150	24
112M/165	9.4	2250	40	18	142	2.2	8	120	0.86/0.92	150	40
112M/165	9.4	3000	30	18	107	1.7	8	120	0.86/0.92	200	40
112L/165	12.5	2250	52	26	142	1.7	8	170	0.86/0.93	150	48
112L/165	14	3000	45	29	107	1.6	8	170	0.88/0.93	200	48
112M/180	12.5	2250	53	27	142	2	8	180	0.88/0.94	150	49
112M/180	12.5	2000	60	27	160	2.2	8	180	0.9/0.94	133	49
112L/180	17	2000	80	33	160	2.0	8	270	0.91/0.92	133	63
112L/180	22	3000	70	40	107	1.7	8	270	0.91/0.94	200	63
132S	21	2250	90	38	142	2.3	8	480	0.91/0.94	150	85
132S	25	3000	80	46	107	1.7	8	480	0.92/0.93	200	85
132L/200	27	2000	130	50	160	2.6	8	544	0.93/0.93	133	93
132L/200	31	3000	100	57	108	1.75	8	544	0.92/0.93	200	93
132L/250	42	2500	160	78	133	2.0	8	680	0.92/0.94	150	110
132L/250	36	2000	170	70	160	2.4	8	680	0.92/0.94	133	110
180/200	46	2000	220	88	160	2.5	8	1300	0.92/0.94	133	160
180/250	54	2000	260	105	160	2.5	8	1600	0.93/0.96	133	170

FEATURES:

- Enclosure IP54 Frame & Mounting- Foot cum flange as per drg.
- Insulation Class "F", Magnets -NdFeB150⁰, winding - Dual Coat class 'H'
- Cooling - Forced air cooling by axial blower fan, Bearing - Deep Groove ball bearings
- Speed feedback at NDE-Resolver/Encoder, Thermal Protection Thermostat/PT 1000
- Connector Details - Resolver 6 PIN, Encoder 17 PIN , Fan & thermal protection 7 PIN
- Power Connection - Terminal Block 3 Stud, Rated voltage 340-380V 3phase

OUTLINE DRAWING WITH DIMENSIONAL SHEET



A - Standard AC Servo Motor

	FRAME SIZE	M	N	P	S	T	LA	D	E	F	GA	G	H	A	B	C	K	HD	AD	AC	LB	L
*	90-S	185	130	-	12	3	10	24j6	50	8	27	20	90	140	100	79	9	180	149	175	295	345
*	90-L	185	130	-	12	3	10	24j6	50	8	27	20	90	140	140	73.5	9	180	151	180	410	460
	112M/165	215	180	250	15	4	15	38k6	65	10	41	33	115	160	140	84	12	278	163	207	435	500
	112L/165	215	180	250	15	4	15	38k6	65	10	41	33	115	160	180	84	12	303	188	207	495	560
	112M/180	215	180	250	15	4	12	42k6	65	12	45	37	115	190	140	94	12	275	160	224	470	535
	112L/180	215	180	250	15	4	12	42k6	65	12	45	37	115	190	200	94	12	318	190	224	530	595
	132-L	265	230	300	15	4	16	42k6	80	12	45	37	135	216	240	106.5	12	355	220	258	630	710
	132-S	265	230	300	15	4	16	42k6	80	12	45	37	135	216	140	106.5	12	345	184	258	540	620
*	160-L	340	250	-	19	5	13	48k6	110	14	51.5	43	160	254	254	137.5	15	425	260	318	690	800
*	180-L	340	250	-	19	5	13	48k6	110	14	51.5	43	180	279	279	137.5	15	425	260	318	690	800

FRAME SIZE	BEARING DE	BEARING NED
90-S	6205-ZZ	6203-ZZ
90-L	6205-ZZ	6203-ZZ
112M/165	6208-ZZ	6304-ZZ
112L/165	6208-ZZ	6205-ZZ
112M/180	6209-ZZ	6305-ZZ
112L/180	6209-ZZ	6207-ZZ
132-L	6309-ZZ	6308-ZZ
132-S	6309-ZZ	6308-ZZ
160-L	6310-ZZ	6310-ZZ
180-L	6310-ZZ	6310-ZZ

B - Hollow shaft Servo motors & high Torque low speed Direct Drive Torque motors

Dimensions:- Can be provided as per customer Requirement

** Terminal box on side

Hollow shaft Servo motors & High Torque low speed Direct Drive Torque motors

Range : Upto 7500 Nm torque (Air and water cooled options)
with integrated encoder/ Resolver



Range 18 to 180 Nm
RPM 250 - 500
KW 1.0 to 4



Range 450 Nm - 7500 Nm
RPM 85 - 250
KW 11 to 190

Application :-

- Pharma Machinery, Hydraulic Press machine.
- Printing & packaging machines, Extrusion machines.

Advantages :-

- Full rated torque and smooth operation even at very low rpm. High values of peak torque.
- Fewer parts & quick easy assembly on machine, eliminates transmission elements such as couplings, gear boxes & belt pulleys.



mark elektriks

Regd. Office & Works Unit -I
Plot No: 15, Gultekdi Industrial Estate, Pune: 411037, India
Phones: 020 24268499, 24275379, Tele Fax: 020 24273162
Email: markelektriks@vsnl.net, sales@markelektriks.com
Website: www.markelektriks.com

Unit -II
Plot no 3, Gate No.862, Velu
Taluka Bhor, Dist. Pune-412205